



Handwritten musical notation on a five-line staff in 3/4 time. The melody consists of quarter notes and dotted quarter notes. Vertical blue lines are placed above the staff to indicate rhythmic accents or fingerings. The notation ends with a double bar line.

Handwritten musical notation on a five-line staff in 3/4 time. The melody consists of quarter notes and dotted quarter notes. Vertical blue lines are placed above the staff to indicate rhythmic accents or fingerings. The notation ends with a double bar line.

Handwritten musical notation on a five-line staff in 4/4 time. The melody consists of quarter notes and half notes. Vertical blue lines are placed above the staff to indicate rhythmic accents or fingerings. The notation ends with a double bar line.

Handwritten musical notation on a five-line staff in 4/4 time. The melody consists of quarter notes and half notes. Vertical blue lines are placed above the staff to indicate rhythmic accents or fingerings. The notation ends with a double bar line.

Handwritten musical notation on a five-line staff in 4/4 time. The melody consists of quarter notes and half notes. Vertical blue lines are placed above the staff to indicate rhythmic accents or fingerings. The notation ends with a double bar line.

Handwritten musical notation on a five-line staff in 4/4 time. The melody consists of quarter notes and half notes. Vertical blue lines are placed above the staff to indicate rhythmic accents or fingerings. The notation ends with a double bar line.

Handwritten musical notation on a five-line staff in 4/4 time. The melody consists of quarter notes and half notes. Vertical blue lines are placed above the staff to indicate rhythmic accents or fingerings. The notation ends with a double bar line.

Handwritten musical notation on a five-line staff in 4/4 time. The melody consists of quarter notes and half notes. Vertical blue lines are placed above the staff to indicate rhythmic accents or fingerings. The notation ends with a double bar line.

Handwritten musical notation on a five-line staff in 4/4 time. The melody consists of quarter notes and dotted quarter notes. Vertical blue lines are placed above the staff to indicate rhythmic accents or fingerings. The notation ends with a double bar line.

Handwritten musical notation on a five-line staff in 4/4 time. The melody consists of quarter notes and dotted quarter notes. Vertical blue lines are placed above the staff to indicate rhythmic accents or fingerings. The notation ends with a double bar line.

### ZADANIE 3

Zrealizuj zadania rytmiczne:

- stukając oburącz jedną ręką wyższy głos, drugą niższy i słuchając pulsu metronomu
- stukając oburącz jedną ręką wyższy głos, drugą niższy i licząc głośno (w trzech ostatnich przykładach można liczyć na cztery, ale również na „raz” i na „trzy” pomijając drugą i czwartą miarę)
- tataizacją wyższy głos, stukając niższy głos i słuchając pulsu metronomu.

Musical notation for rhythmic exercise 1. It consists of two staves in 2/4 time. The upper staff contains a sequence of eighth notes: G4, A4, B4, C5, B4, A4, G4, F4, E4, D4, C4. The lower staff contains a sequence of quarter notes: G3, F3, E3, D3, C3, B2, A2, G2, F2, E2, D2, C2.

Musical notation for rhythmic exercise 2. It consists of two staves in 2/4 time. The upper staff contains a sequence of eighth notes: G4, A4, B4, C5, B4, A4, G4, F4, E4, D4, C4. The lower staff contains a sequence of quarter notes: G3, F3, E3, D3, C3, B2, A2, G2, F2, E2, D2, C2.

Musical notation for rhythmic exercise 3. It consists of two staves in 2/4 time. The upper staff contains a sequence of eighth notes: G4, A4, B4, C5, B4, A4, G4, F4, E4, D4, C4. The lower staff contains a sequence of quarter notes: G3, F3, E3, D3, C3, B2, A2, G2, F2, E2, D2, C2.

Musical notation for rhythmic exercise 4. It consists of two staves in 4/4 time. The upper staff contains a sequence of eighth notes: G4, A4, B4, C5, B4, A4, G4, F4, E4, D4, C4. The lower staff contains a sequence of quarter notes: G3, F3, E3, D3, C3, B2, A2, G2, F2, E2, D2, C2.

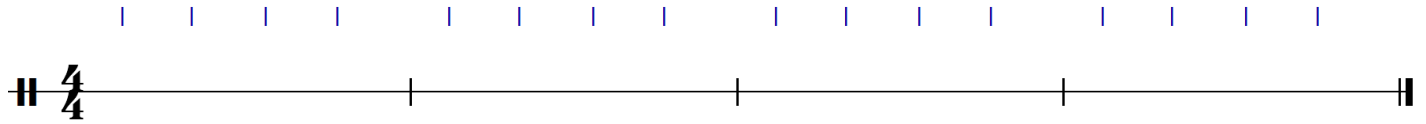
Musical notation for rhythmic exercise 5. It consists of two staves in 4/4 time. The upper staff contains a sequence of eighth notes: G4, A4, B4, C5, B4, A4, G4, F4, E4, D4, C4. The lower staff contains a sequence of quarter notes: G3, F3, E3, D3, C3, B2, A2, G2, F2, E2, D2, C2.

Musical notation for rhythmic exercise 6. It consists of two staves in 4/4 time. The upper staff contains a sequence of eighth notes: G4, A4, B4, C5, B4, A4, G4, F4, E4, D4, C4. The lower staff contains a sequence of quarter notes: G3, F3, E3, D3, C3, B2, A2, G2, F2, E2, D2, C2.

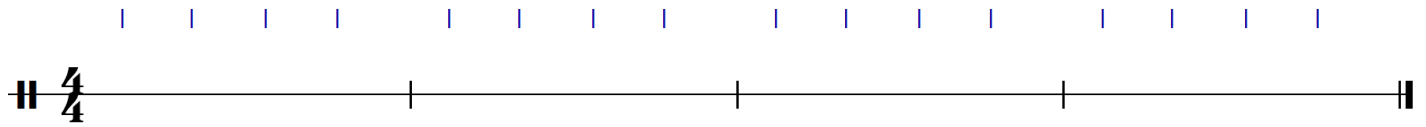
## ZADANIE 4

Zanotuj dyktanda rytmiczne w metrum 4/4. Każdy przykład zabrzmi siedem razy.

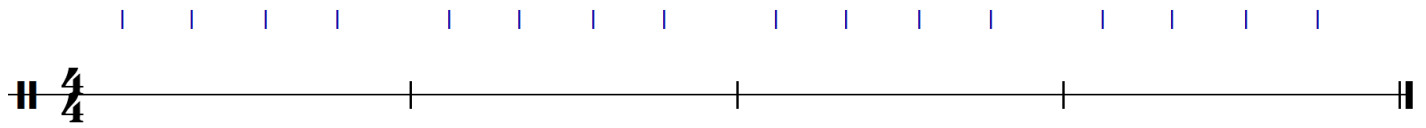
Nagranie przykładu **a**: <https://soundcloud.com/user-245975663/4-zad-4a/s-R6QcE5KzS7k>



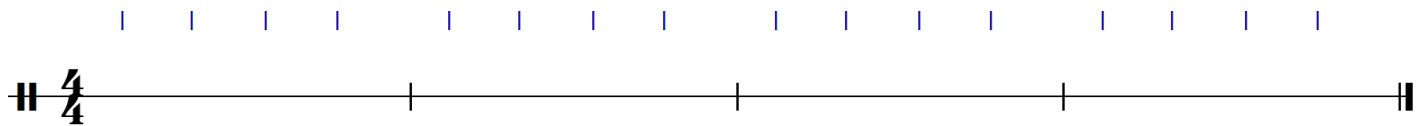
Nagranie przykładu **b**: <https://soundcloud.com/user-245975663/4-zad-4b/s-jgNBmoxLcmN>



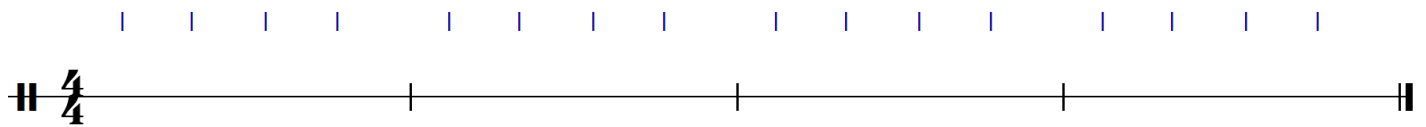
Nagranie przykładu **c**: <https://soundcloud.com/user-245975663/4-zad-4c/s-5y6YxHoA3Ms>



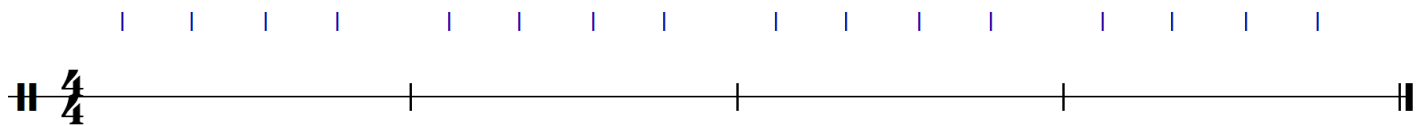
Nagranie przykładu **d**: <https://soundcloud.com/user-245975663/4-zad-4d/s-FYtFV9tsEuT>



Nagranie przykładu **e**: <https://soundcloud.com/user-245975663/4-zad-4e/s-wLNf1SwZpX>



Nagranie przykładu **f**: <https://soundcloud.com/user-245975663/4-zad-4f/s-0EvMT8iFjgg>



# KLUCZ

## ZADANIE 4

